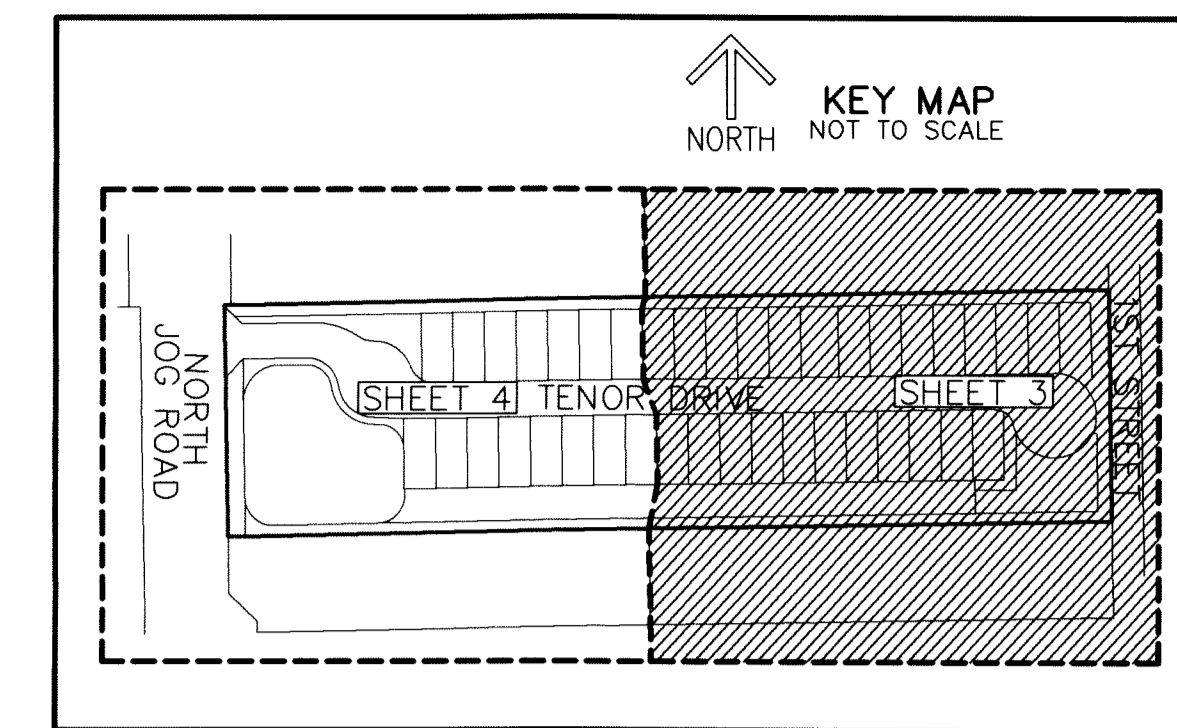


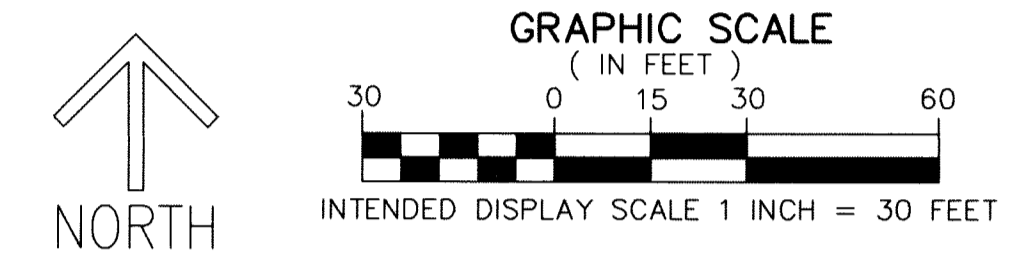
THIS INSTRUMENT PREPARED BY  
DAVID P. LINDLEY  
OF  
**CAULFIELD and WHEELER, INC.**  
SURVEYORS - ENGINEERS - PLANNERS  
7900 GLADES ROAD, SUITE 100  
BOCA RATON, FLORIDA 33434 - (561)392-1991  
CERTIFICATE OF AUTHORIZATION NO. LB3591

# SYMPHONY PLACE

BEING A REPLAT OF A PORTION OF TRACTS 57 AND 58, BLOCK 5,  
THE PALM BEACH FARMS CO PLAT NO. 3,  
AS RECORDED IN PLAT BOOK 2, PAGES 45 THROUGH 54 OF THE PUBLIC RECORDS  
OF PALM BEACH COUNTY, FLORIDA,  
LYING IN SECTION 34, TOWNSHIP 43 SOUTH, RANGE 42 EAST,  
PALM BEACH COUNTY, FLORIDA



**SHEET 3 OF 4**



**NOTES**  
**COORDINATES, BEARINGS AND DISTANCES**  
COORDINATES SHOWN ARE GRID  
DATUM = NAD 83 (1990 ADJUSTMENT)  
ZONE = FLORIDA EAST  
LINEAR UNIT = US SURVEY FEET  
COORDINATE SYSTEM 1983 STATE PLANE  
TRANSVERSE MERCATOR PROJECTION  
ALL DISTANCES ARE GROUND UNLESS OTHERWISE NOTED  
SCALE FACTOR = 1.00003056  
GROUND DISTANCE X SCALE FACTOR = GRID DISTANCE  
BEARINGS AS SHOWN HEREON ARE GRID DATUM,  
NAD 83 (1990 ADJUSTMENT), FLORIDA EAST ZONE.

**LEGEND/ABBREVIATIONS**  
C - CENTERLINE  
Δ - DELTA (CENTRAL ANGLE)  
CD - CHORD BEARING  
CD - CHORD DISTANCE  
DE - DRAINAGE EASEMENT  
E - EASTING (WHEN USED WITH COORDINATES)  
L - ARC LENGTH  
LB - LICENSED BUSINESS  
LMAE - LAKE MAINTENANCE EASEMENT  
LME - LAKE MAINTENANCE ACCESS EASEMENT  
LSE - LIFT STATION EASEMENT  
N - NORTHING (WHEN USED WITH COORDINATES)  
MOHE - MAINTENANCE AND OVERHANG EASEMENT  
MTE - MASS TRANSIT EASEMENT  
O.R.B. - OFFICIAL RECORD BOOK  
PBCUE - PALM BEACH COUNTY UTILITY EASEMENT  
PDE - PUBLIC DRAINAGE EASEMENT  
PT - POINT OF TANGENCY  
PNT - POINT OF NON-TANGENCY  
R - RADIUS  
UE - UTILITY EASEMENT  
◀ - INDICATES "ZERO" SIDE OF LOT LINE  
■ PRM - DENOTES PERMANENT REFERENCE MONUMENT  
4" x 4" x 24" CONCRETE MONUMENT WITH ALUMINUM DISK STAMPED "C&W PRM LB3591"  
● PCP - DENOTES PERMANENT CONTROL POINT  
△ - DENOTES HORIZONTAL CONTROL POINT

